

# **ELFO XL**

**Hydraulic Homelift**



## General Features

|                     |  |
|---------------------|--|
| Normative           | Machine directive 2006/42/CE – EN8141  |
| Certified body      | IMQ  |
| Loads               | 300 Kg – 400 Kg - 500 Kg   |
| Power supply        | 230 V monofase (+/- 5%) - 50/60 Hz - 400 V trifase                             |
| Starts per hour     | 30   |
| Duty cycle          | 33%  |
| Entrances           | Single – Opposite/Side – Triple  |
| Speed               | 0,15 m/s – (0.30 m/s no CE certification)                                      |
| Travel (max)        | 18.5 mt  |
| N° Stops (max)      | 8  |
| N° Services (max)   | 8  |
| Minimum travel      | 0.5 mt   |
| Control panel       | EP eprom mother board.   |
| Emergency manoeuvre | In case of black-out, the cabin wil descent to lower floor and open the doors. |
| Drive               | Hydraulic indirect 2:1   |
| Sling               | Cantilever   |

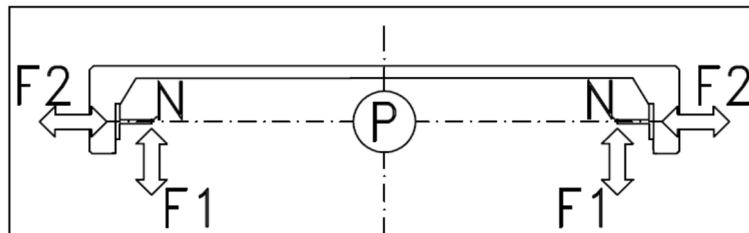
| Headroom (mm) |              |      |      |
|---------------|--------------|------|------|
|               | cabin height |      |      |
|               | 2000         | 2100 | 2180 |
| No-cabin door | 2150         | 2300 | 2400 |
| Foding door   | 2250         | 2350 | 2400 |
| Sliding door  | 2350         | 2450 | 2450 |

| Distance between floors (mm) |                       |           |
|------------------------------|-----------------------|-----------|
|                              | 2000 door opening (H) |           |
|                              | Masonry               | Structure |
| Swing door                   | Masonry               | 2150      |
|                              | Structure             | 2220      |
| Sliding door                 | Masonry               | 2350      |
|                              | Structure             | 2410      |

## Reactions

NU: During normal use  
 SGI: Safety gear intervention

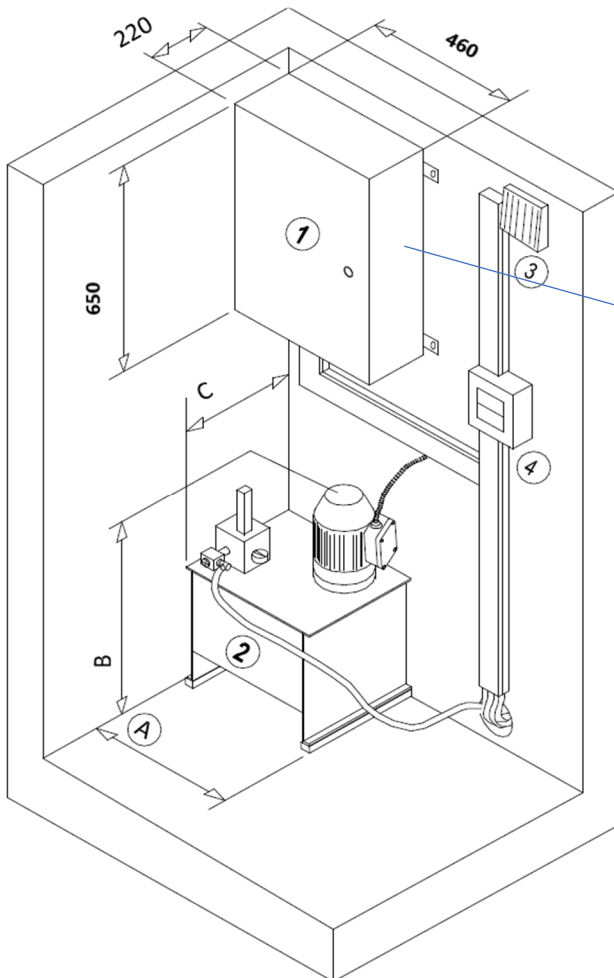
P: reaction under the piston  
 N: reaction under the guide rails (each)  
 F1: Guide rail bracket transversal reaction  
 F2: Guide rail bracket longitudinal reaction



|    | 300   |       | 400 – 500Kg |       |
|----|-------|-------|-------------|-------|
|    | NU    | SGI   | NU          | SGI   |
| P  | 10869 | 16874 | 12780       | 19806 |
| N  | 1210  | 8844  | 1210        | 10120 |
| F1 | 1452  | 2421  | 1713        | 2854  |
| F2 | 250   | 416   | 385         | 642   |

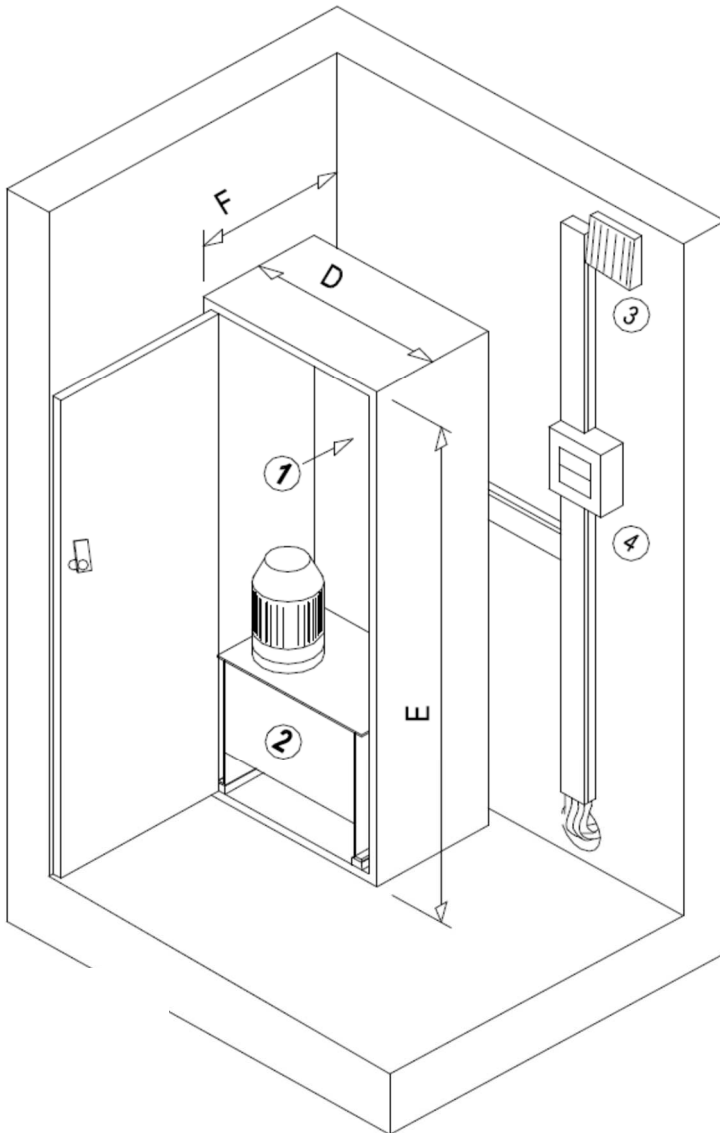
NB Loads are not simultaneously

## Machine room



1- Motherboard case  
RAL7035

- 2 – Pump unit
- 3 – Alarm buzzer
- 4 – control panel main switch

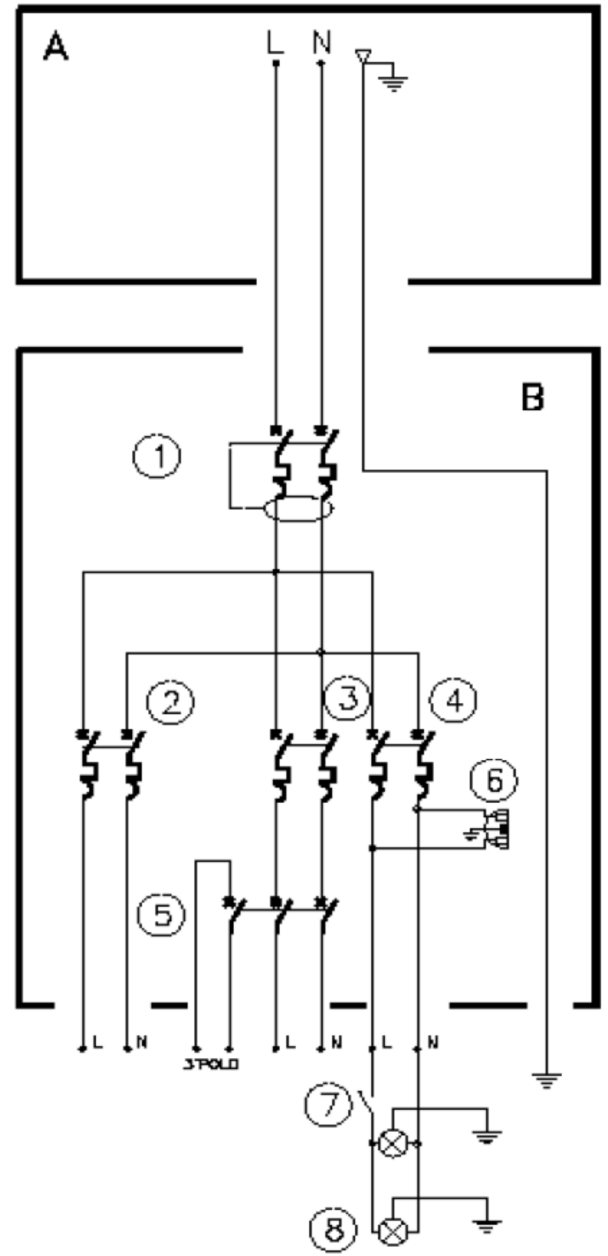
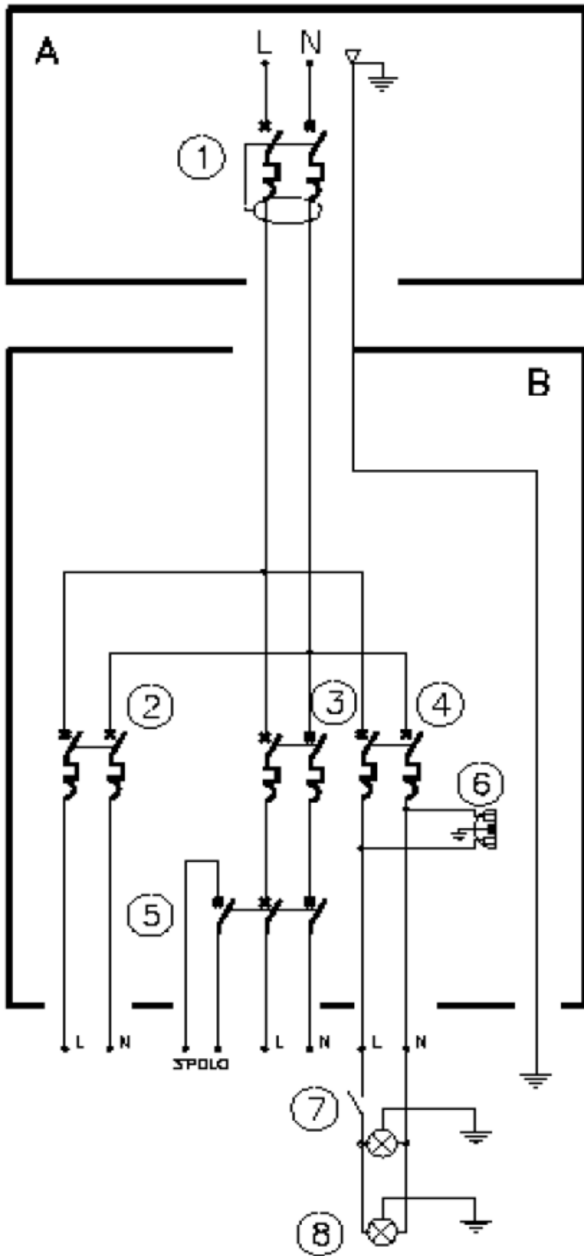


Dimensions:  
D = 770 mm  
F = 420/560 mm  
E = 1650 mm

**Technical cabinet in F12PPS  
skinplate**



Electric diagram 230V - MONOPHASE





## Electric diagram 230V - MONOPHASE

Legenda:

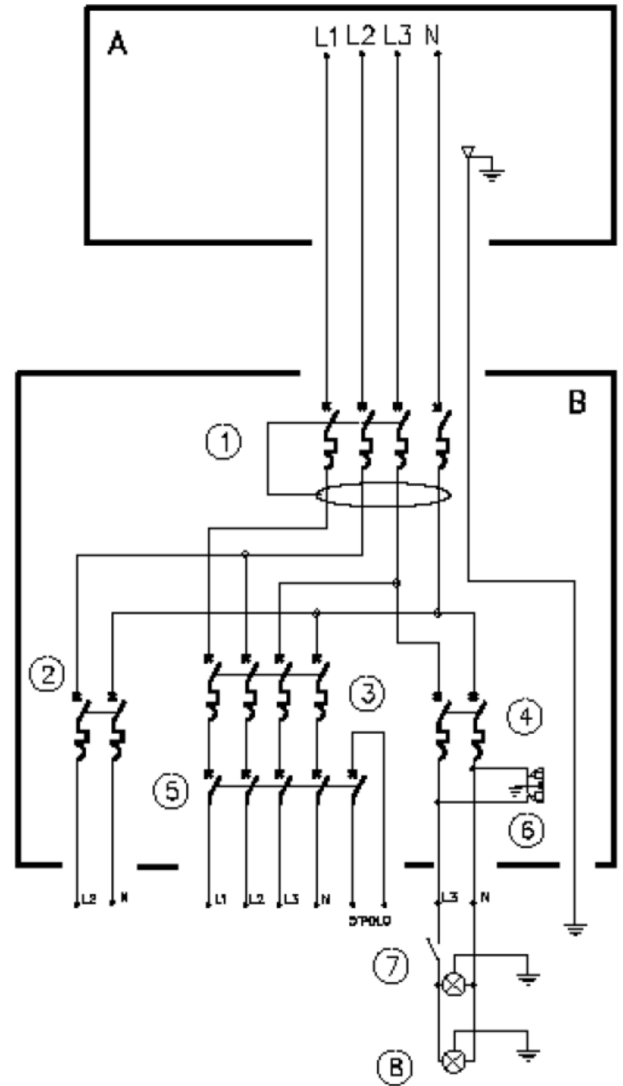
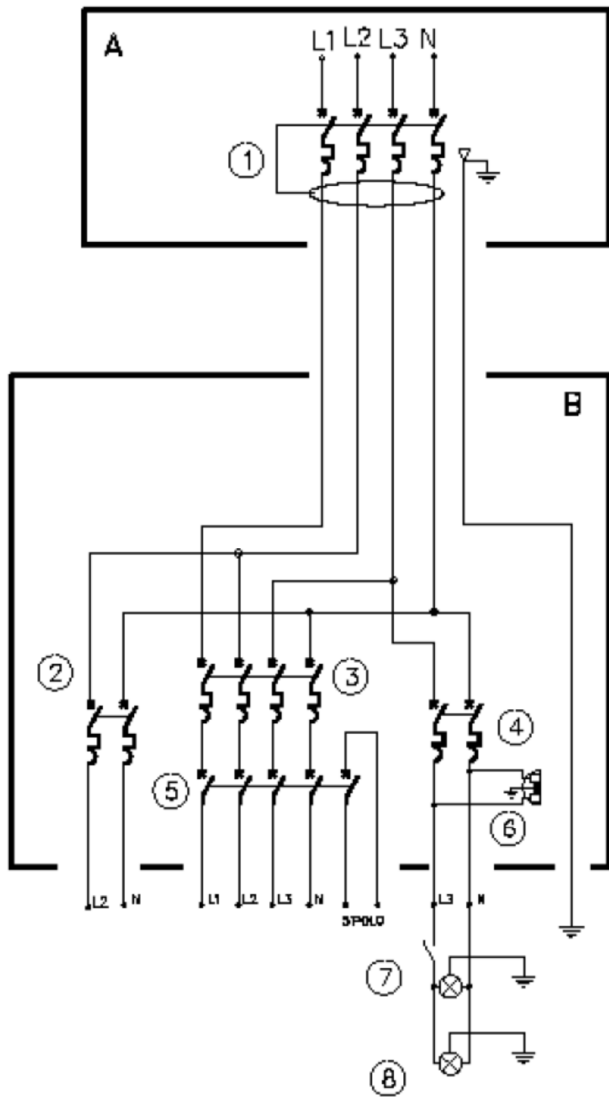
A Breaker

B Power supply board

- 1 - Differential-Magnetothermic switch monophas 2 x 25 A type B, idn 0.03-A\*\*
  - 2 - Differential-Magnetothermic monophas for valve heating device 2 x 10A
  - 3 - Differential-Magnetothermic switch monophas power supply control panel 2 X \*\*A
  - 4 - Differential-Magnetothermic switch 2 x 10A for potential shaft lighting, Machine room and socket 2P+T 10A 230V
  - 5 - Breaker 3 poles control panel power supply and emergency enabling contact
  - 6 - Socket 2P + T 10A inside the control panel
  - 7 - Shaft lighting switches
  - 8 - Shaft lighting device (optional)
- \*\* The size of the breaker has to be evaluated by the installer in function of any additional power absorption caused by eventual devices not provided by the supplier.

**Telephone line:** landline or GSM has to be provided by final user

### Electric diagram 400V - THREEPHASE







## Electric diagram 400V - THREEPHASE

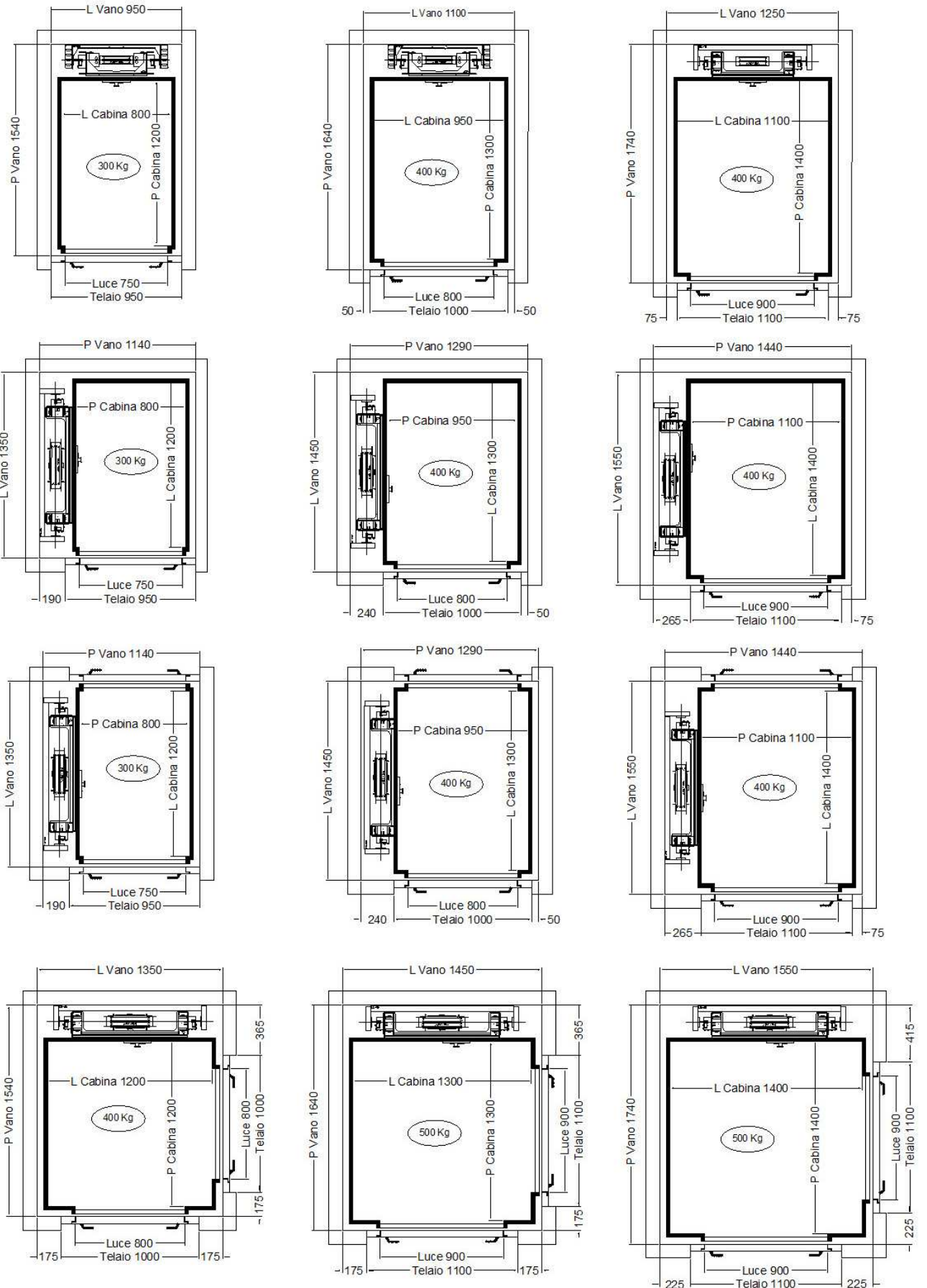
### Legenda:

- A Breaker
- B Power supply board

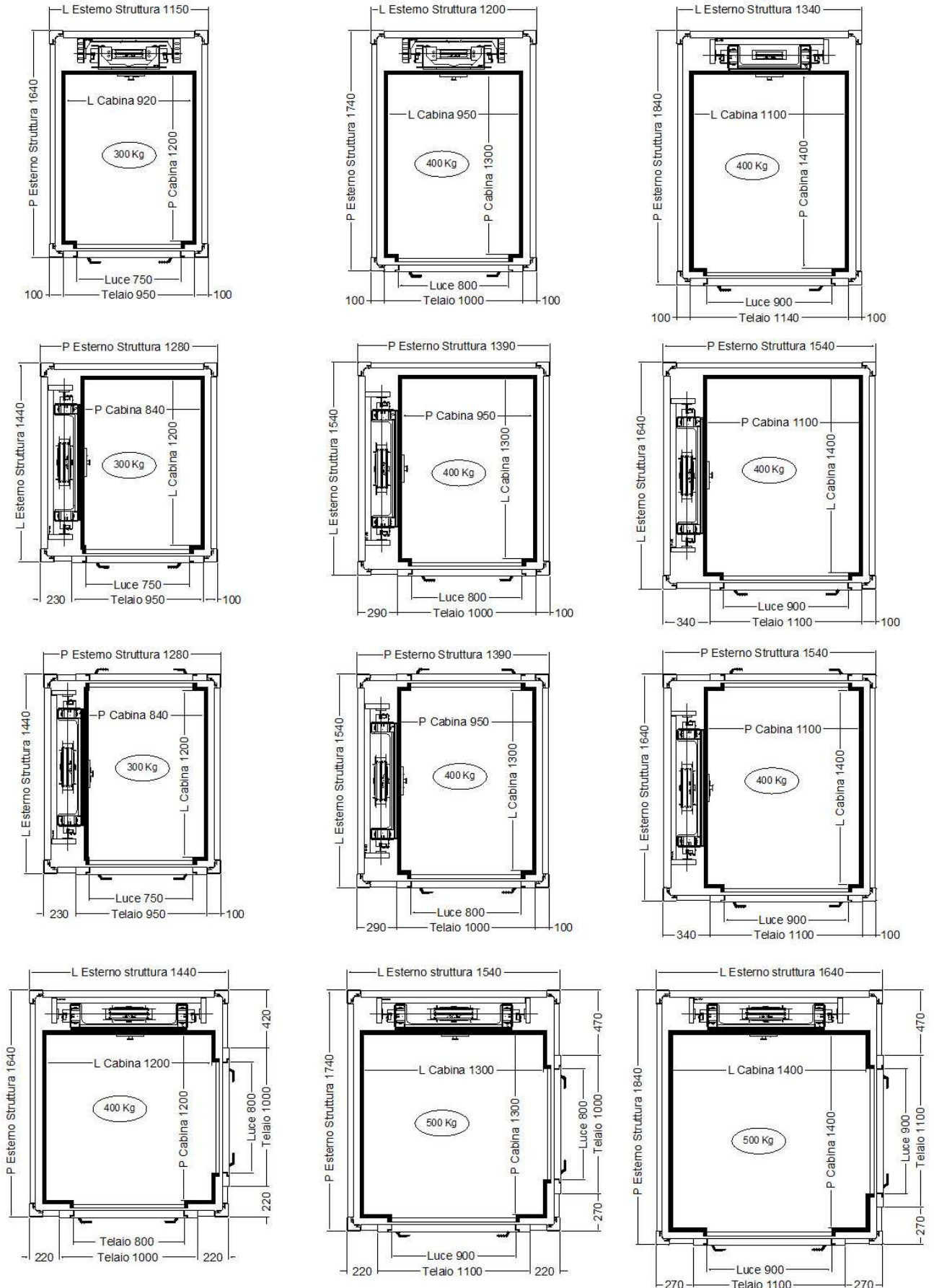
- 1 - Differential-Magnetothermic switch threephase + neutral, 400V - 4 x \*\*A, idn 0.03A
  - 2 - Differential-Magnetothermic monophasic for valve heating device 2 x 10A
  - 3 - Differential-Magnetothermic switch threephase + neutral, 400V - 4 x \*\*A for control panel
  - 4 - Differential-Magnetothermic switch 2 x 10A for potential shaft lighting, Machine room and socket 2P+T 10A 230V
  - 5 - Breaker poles control panel power supply and emergency enabling contact
  - 6 - 2P+T 10 A - 230V sockets in the shaft \*\*
  - 7 - Shaft lighting switches
  - 8 - Shaft lighting device (optional)
- \*\* The size of the breaker has to be evaluated by the installer in function of any additional power absorption caused by eventual devices not provided by the supplier.

**Telephone line:** landline or GSM has to be provided by final

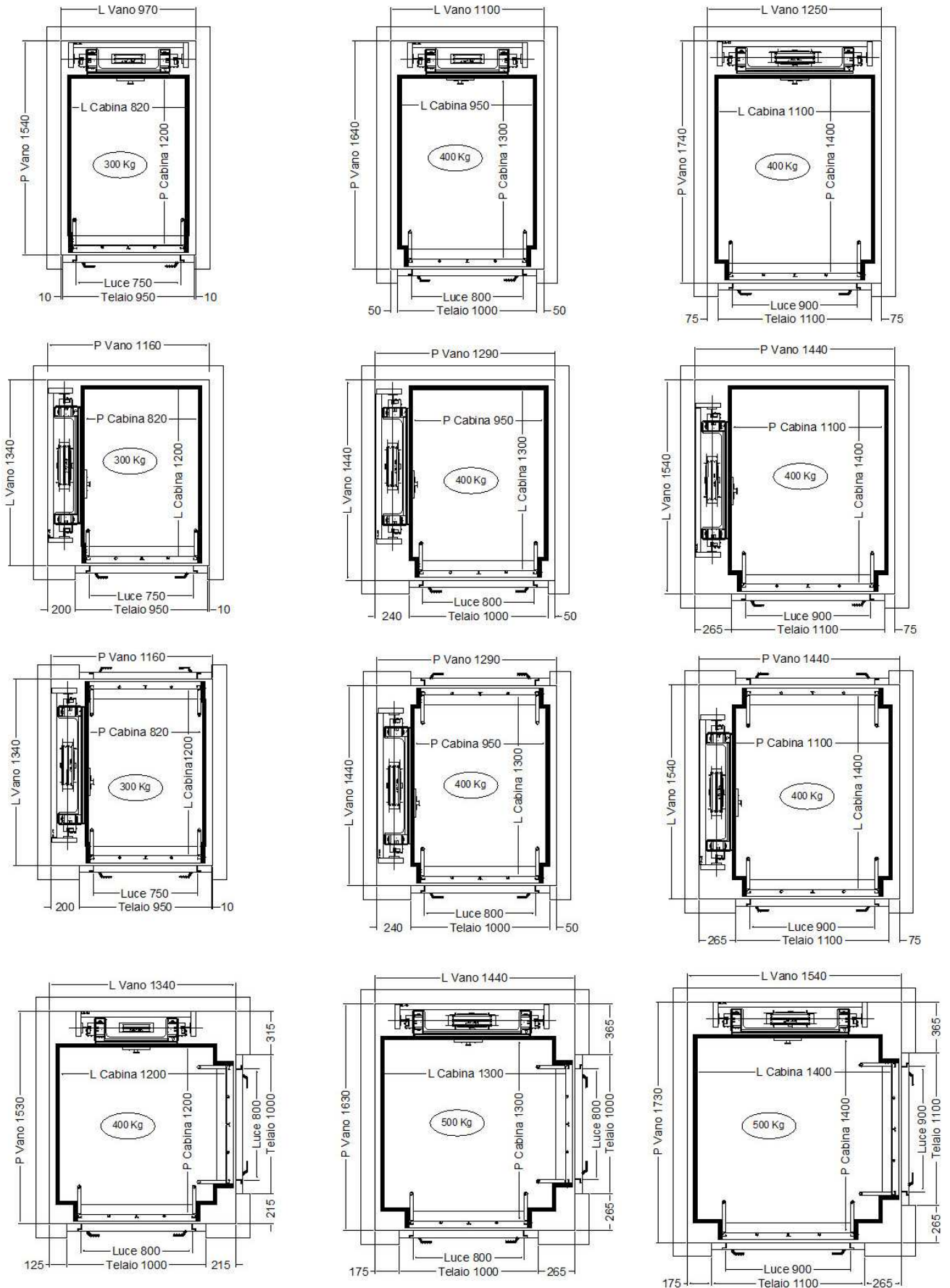
## Masonry shaft – Swing door



## Structure – Swing door



## Masonry shaft – Folding door + Swing door





## Strutture – Folding door + swing door



## Masonry shaft – Sliding door 2 panel



## Structure – Sliding door 2 panel



### Masonry shaft - Sliding door 3 panel





## Structure – Sliding door 3 panel





**EP Elevatori Premontati srl**  
Tel. +39 050 875091  
[www.elevatoripremontati.it](http://www.elevatoripremontati.it) - [info@elevatoripremontati.it](mailto:info@elevatoripremontati.it)

